



34 Paget Street, Pontypridd, CF37 3LF
£750 Per Calendar Month

*** Available now ** Village location ** Convenient for amenities ***

Viewing recommended on this well presented, mid terraced house comprising of entrance hall, large lounge, new kitchen/diner with oven and hob, two bedrooms, dressing room/home office and refitted, first floor bathroom.

There is an enclosed rear garden together with double glazing and gas combi heating.

Conveniently located for amenities, local shops, school and doctors.

Recommended.

Ready now.

Entrance Hall

Lounge 20'10" x 11'3" (6.34 x 3.42)



Kitchen/Diner 13'10" x 9'1" (4.22 x 2.76)

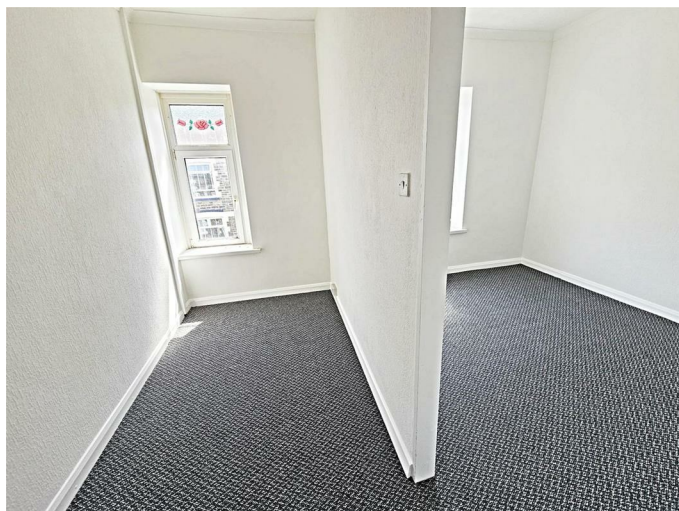


First Floor Landing

Bedroom 1 10'2" x 8'11" (3.11 x 2.72)



Dressing Room/Home Office 10'2" x 5'3" (3.11 x 1.60)



Bedroom 2 10'4" x 8'8" (3.14 x 2.63)



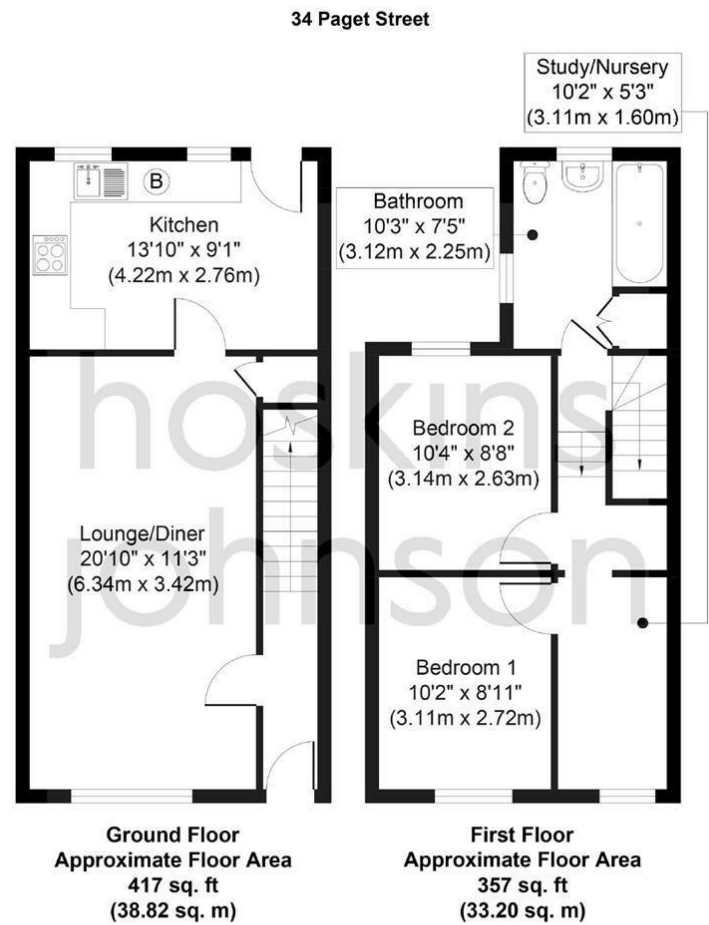
Bathroom/WC



Garden



Floor Plan

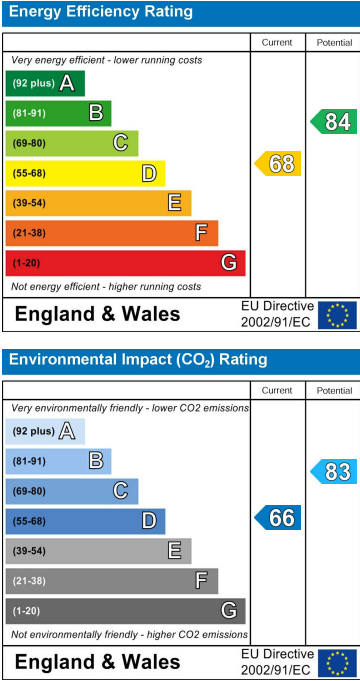


For illustration purposes only. Measurements are approximate. Not to scale

Area Map



Energy Efficiency Graph



These particulars, whilst believed to be accurate are set out as a general outline only for guidance and do not constitute any part of an offer or contract. Intending purchasers should not rely on them as statements of representation of fact, but must satisfy themselves by inspection or otherwise as to their accuracy. No person in this firms employment has the authority to make or give any representation or warranty in respect of the property.